

## Ontario Heating Ltd.

4 Pine Street, Toronto ON  
M9N 2Y8




Phone: 416-247-0045

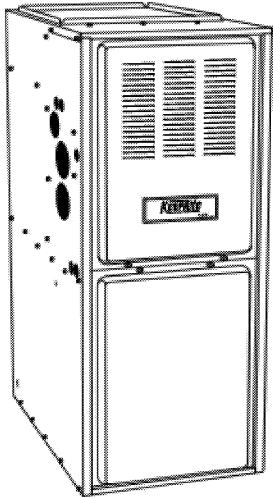
Fax: 416-247-2012

*[www.ontarioheatingltd.com](http://www.ontarioheatingltd.com)*

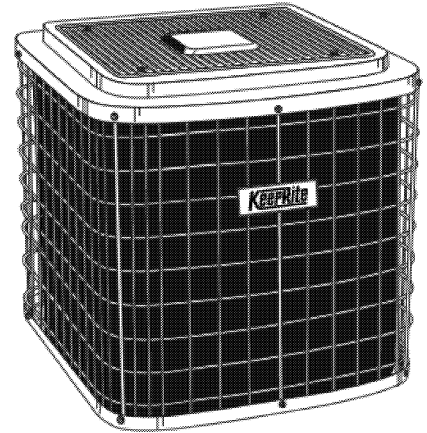
*email: [ontariohtg ltd@ca.inter.net](mailto:ontariohtg ltd@ca.inter.net)*

# TABLE OF CONTENTS

	<u>Page</u>
Accessories (humidifiers/air-cleaners etc.)	20
ADP Air Handlers	14
Ducane Condensers	12
Ducane Furnaces	13
Ducane Unit Heaters	14
Elbows: Aluminium & Galvanized	23
Evaporator Coils	10
Extended Warranty Packages 	15
Fittings & Pipe	24
Keeprite Condensers	4 & 5
Keeprite Ductless Split Systems	6
Keeprite Furnaces	7-9
Liner Kits & Diffusers	25
Montigo Fireplaces	17-19
Thermostats	22
Turbotorch Accessories 	21
Yellow Jacket Accessories 	21



**5** Year Parts Limited Warranty



# KeepRite

**20** Year Heat Exchanger Limited Warranty

**5** Year Compressor Limited Warranty

**25** Year Heat Exchanger Limited Warranty



**10** Year Compressor Limited Warranty

**Lifetime** Stainless Steel Heat Exchanger Limited Warranty



**10** SEER  
STANDARD EFFICIENCY

**12** SEER  
SUPER-HIGH EFFICIENCY



# CONDENSING UNITS

## KeepRite

### NAC SERIES

#### Entry Level Condensing Unit - Reciprocating

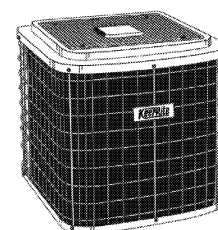
#### Compressor

(10 & 12 High Efficiency Series)



Model	NAC018AKB	NAC024AKA	NAC030AKA	NAC036AKA
Input	18,000	24,000	30,000	36,000
Tonnage	1.5Ton	2Ton	2.5Ton	3.0Ton
Line Sizes	3/4" 3/8"	3/4" 3/8"	3/4" 3/8"	3/4" 3/8"
Dimensions (H" x W" x D")	24x24 3/4x26 1/2	26x24 3/4x26 1/2	26x24 3/4x26 1/2	28x24 3/4x26 1/2
List Price	\$1,039.12	\$1,061.44	\$1,207.76	\$1,371.44

Model	NAC042AKA	NAC048AKA	NAC060AKA
Input	42,000	48,000	60,000
Tonnage	3.5Ton	4.0Ton	5Ton
Line Sizes	7/8" 3/8"	7/8" 3/8"	7/8" 3/8"
Dimensions (H" x W" x D")	32x24 3/4x26 1/2	28x29 3/4x32 3/4	32x29 3/4x32 3/4
List Price	\$1,783.12	\$1,889.76	\$2,395.68



### CAC SERIES

#### With Scroll Compressor

(Softsound 1000+ Series)



Model	CAC018AKA	CAC024AKA	CAC030AKA	CAC036AKA
Input	18,000	24,000	30,000	36,000
Tonnage	1.5Ton	2Ton	2.5Ton	3.0Ton
Line Sizes	3/4" 3/8"	3/4" 3/8"	3/4" 3/8"	3/4" 3/8"
Dimensions (H" x W" x D")	26 5/8x24 3/4x26 1/2	26 5/8x24 3/4x26 1/2	26 5/8x24 3/4x26 1/2	28 5/8x24 3/4x26 1/2
List Price	\$1,388.80	\$1,411.12	\$1,579.76	\$1,855.04

Model	CAC042AKA	CAC048AKA	CAC060AKA
Input	42,000	48,000	60,000
Tonnage	3.5Ton	4.0Ton	5Ton
Line Sizes	7/8" 3/8"	7/8" 3/8"	7/8" 3/8"
Dimensions (H" x W" x D")	36 5/8x24 3/4x26 1/2	32 5/8x29 3/4x32 3/4	34 5/8x29 3/4x32 3/4
List Price	\$2,150.16	\$2,440.32	\$2,822.24

### KAC SERIES

#### Two Speed / With Scroll Compressor and Jacket

(Softsound Optima III Series)



Model	KAC018GKC	KAC024GKC	KAC030GKC	KAC036GKC
Input	18,000	24,000	30,000	36,000
Tonnage	1.5Ton	2Ton	2.5Ton	3.0Ton
Line Sizes	3/4" 3/8"	3/4" 3/8"	3/4" 3/8"	3/4" 3/8"
Dimensions (H" x W" x D")	26 5/8x24 3/4x26 1/2	26 5/8x24 3/4x26 1/2	26 5/8x24 3/4x26 1/2	26 5/8x24 3/4x28 1/2
List Price	\$1,604.56	\$1,641.76	\$1,763.28	\$1,996.40



# CONDENSING UNITS

## KeepRite



### CXA SERIES

Provides superior performance and ultra-quiet operation / With Scroll Compressor  
(Softsound 1200R Series)

Model	CXA224AKA	CXA230AKA	CXA236AKA	CXA242AKA
Input	24,000	30,000	36,000	42,000
Tonnage	2Ton	2.5Ton	3.0Ton	3.5Ton
Line Sizes	3/4" 3/8"	3/4" 3/8"	3/4" 3/8"	7/8" 3/8"
Dimensions (H" x W" x D")	25 1/2x24 3/4x26 1/2	42 1/10x29 3/4x32 3/4	38 1/10x29 3/4x32 3/4	42 1/10x29 3/4x32 3/4
List Price	\$2,306.40	\$2,581.68	\$2,966.08	\$3,030.56

Model	CXA248AKA	CXA260AKA
Input	48,000	60,000
Tonnage	4.0Ton	5Ton
Line Sizes	7/8" 3/8"	1 1/8" 3/8"
Dimensions (H" x W" x D")	40 1/10x33x35	46 1/10x33x35
List Price	\$3,856.40	\$4,540.88

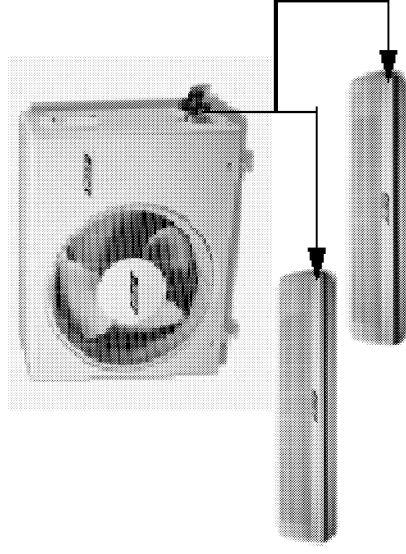
### CAC2 SERIES

Built for quiet, durability, and energy efficiency  
/With Scroll Compressor  
(Softsound 1200 Series)

Model	CAC224AKA	CAC230AKA	CAC236AKA	CAC242AKA
Input	24,000	30,000	36,000	42,000
Tonnage	2 Ton	2.5 Ton	3 Ton	3.5 Ton
Line Sizes	3/4" 3/8"	3/4" 3/8"	3/4" 3/8"	7/8" 3/8"
Dimensions (H" x W" x D")	26 5/8x24 3/4x26 1/2	26 5/8x24 3/4x26 1/2	34 5/8x29 3/4x32 3/4	38 3/4x29 3/4x32 3/4
List Price	\$1,748.40	\$1,974.08	\$2,207.20	\$2,658.56

# KEEPRITE DUCTLESS SPLIT SYSTEM AIR CONDITIONERS

- ⇒ Wireless LCD remote control
- ⇒ Washable air filter
- ⇒ Three speed fan control
- ⇒ 'Fuzzy Logic' Spring breeze airflow
- ⇒ Two way auto swing control
- ⇒ 24 hour system timer
- ⇒ Sleep control circuit
- ⇒ Temperature controlled by advanced computer logic
- ⇒ Ultra quiet operation
- ⇒ Attractive low profile styling
- ⇒ U.L listed for safety
- ⇒ A.R.I rated for capacity
- ⇒ One year all parts, five year compressor warranty



## System Specifications

Model Number	HMC009KD1 (Single-Zone)	HMC012KD1 (Single-Zone)	HMC018KD1 (Single-Zone)	HMC018KDD1 (Dual - Zone)	HMC024KD1 (Single-Zone)	HMC024KDD1 (Dual - Zone)	HMC030KD1 (Single-Zone)	HMC036KDT1 (Tri-zone 3Ton)
Voltage	115	115	208 / 230	208 / 230	208 / 230	208 / 230	208 / 230	208 / 230
Cooling Capacity	9,000	12,000	18,000	18,000	24,000	24,000	30,000	36,000
Line Sizes	1/4" 1/2"	1/4" 1/2"	1/4" 5/8"	1/4" 3/8"	3/8" 5/8"	1/4" 1/2"	3/8" 5/8"	1/4" 1/2"
Refrigerant	R-22	R-22	R-22	R-22	R-22	R-22	R-22	R-22
List Price	\$1,769.00	\$2,025.20	\$2,510.76	\$3,294.00	\$2,842.60	\$3,647.80	\$3,425.00	\$6,112.91

# MID-EFFICIENCY FURNACES

## KeepRite

### N8MPN

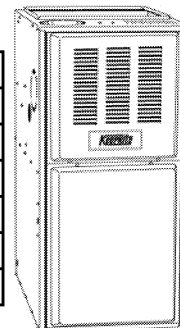
### SERIES

**Upflow / Horizontal Gas Furnace (PS80)**



(Replaces old model: NTG3)

MODEL NUMBER	N8MPN050B12A	N8MPN075B12A	N8MPN100F14A	N8MPN125J20A
Input	50,000	75,000	100,000	125,000
Cooling Capacity	1.5 - 3.0 Ton	1.5 - 3.0 Ton	1.5 3.5Ton	3.5 - 5.5 Ton
Vent Size	3"	4"	4"	4"
Supply Opening (in)	14X18 1/2	14X18 1/2	17 5/8X18 1/2	21 1/4X18 1/2
Dimensions (H" x W" x D")	35x15 1/2x28 1/2	35x15 1/2x28 1/2	35x19 1/8x28 1/2	35x22 3/4x28 1/2
List Price	<b>\$1,103.60</b>	<b>\$1,125.92</b>	<b>\$1,185.44</b>	<b>\$1,354.08</b>



### C8MPN

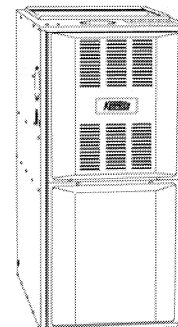
### SERIES

**Upflow / Horizontal Gas Furnace**



(Replaces old model: (Softsound DLX80) NTC6)

MODEL NUMBER	C8MPN050B12A	C8MPN075B12A	C8MPN100F14A	C8MPN125J20A
Input	50,000	75,000	100,000	125,000
Cooling Capacity	1.5 - 3.0 Ton	1.5 - 3.0 Ton	1.5 - 3.5Ton	3.0 - 5.0Ton
Vent Size	4"	4"	4"	4"
Supply Opening (in)	14 x 18 1/2	14 x 18 1/2	17 5/8 x 18 1/2	21 1/4 x 18 1/2
Dimensions (H" x W" x D")	40x15 1/2x28 1/2	40x15 1/2x28 1/2	40x19 1/8x28 1/2	40x22 3/4x28 1/2
List Price	<b>\$1,257.36</b>	<b>\$1,299.52</b>	<b>\$1,396.24</b>	<b>\$1,547.52</b>



### C8MPT

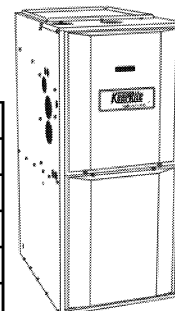
### SERIES

**Upflow / Horizontal Gas Furnace-Two**

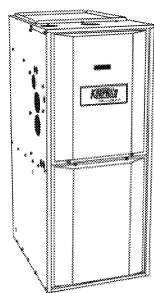


(Replaces old model: **Stage** (Softsound IIS80) NTP6)

MODEL NUMBER	C8MPT050B12A	C8MPT075F14A	C8MPT100F14A	C8MPT125J20A
Input	50,000	75,000	100,000	125,000
Cooling Capacity	1.5 - 3.0 Ton	1.5 - 3.5 Ton	1.5 3.5Ton	3.0 - 5.0Ton
Vent Size	4"	4"	4"	4"
Supply Opening (in)	17 5/8x18 1/2	17 5/8x18 1/2	17 5/8x18 1/2	21 1/4x18 1/2
Dimensions (H" x W" x D")	40x15 1/2x28 1/2	40x19 1/8x28 1/2	40x19 1/8x28 1/2	40x22 3/4x28 1/2
List Price	<b>\$1,584.72</b>	<b>\$1,743.44</b>	<b>\$1,832.72</b>	<b>\$1,979.04</b>



Ontario Heating Ltd.  
 4 Pine St., Toronto, On, M9N 2Y8  
 P:(416) 247-0045, F: (416) 247-2012



# HIGH-EFFICIENCY FURNACES

**KeepRite**

**Lifetime**  
Stainless Steel Heat Exchanger  
Limited Warranty

## C9MPD SERIES

**Upflow/Downflow / Horizontal Dual  
Certified Gas Furnace - Single Stage**  
(Softsound DLX90)

MODEL NUMBER	C9MPD050F12A	C9MPD075F12A	C9MPD100J14A	C9MPD125L20A
Input	50,000	75,000	100,000	125,000
Cooling Capacity	1.5 - 3.0 Ton	1.5 - 3.0 Ton	2 - 3.5 Ton	3.5 - 5.0 Ton
Vent Size	2" - 3"	2" - 3"	3"	3"
Supply Opening (in)	17 5/8x18 1/2	17 5/8x18 1/2	21 1/4x18 1/2	23x18 1/2
Dimensions (H" x W" x D")	40x19 1/8x29	40x19 1/8x29	40x22 3/4x29	40x24 1/2x29
List Price	\$2,122.88	\$2,160.08	\$2,343.60	\$2,683.36

## C9MPT SERIES

**Upflow/Downflow / Horizontal Dual  
Certified Gas Furnace - Two Stage**  
(Softsound IIS90)

MODEL NUMBER	C9MPT050F12A	C9MPT075F12A	C9MPT100J16A	C9MPT125L20A
Input	50,000	75,000	100,000	125,000
Cooling Capacity	1.5 - 3.0Ton	1.5 - 3.0Ton	4Ton	5Ton
Vent Size	2" - 3"	2" - 3"	3"	3"
Supply Opening (in)	17 5/8x18 1/2	17 5/8x18 1/2	21 1/4x18 1/2	23x18 1/2
Dimensions (H" x W" x D")	40x19 1/8x29	40x19 1/8x29	40x22 3/4x29	40x24 1/2x29
List Price	\$2,467.60	\$2,618.89	\$2,827.20	\$3,137.20

## C9MPV SERIES

**Upflow/Downflow / Horizontal Dual  
Certified Gas Furnace- Two Stage, Variable  
Speed**  
(Softsound VS90)

MODEL NUMBER	C9MPV050F12A	C9MPV075F12A	C9MPV100J20A	C9MPV125L20A
Input	50,000	75,000	100,000	125,000
Cooling Capacity	1.5 - 3.0Ton	3.0Ton	4Ton	5Ton
Vent Size	2"	2" - 3"	3"	3"
Supply Opening (in)	17 5/8x18 1/2	17 5/8x18 1/2	21 1/4x18 1/2	23x18 1/2
Dimensions (H" x W" x D")	40x19 1/8x29	40x19 1/8x29	40x22 3/4x29	40x24 1/2x29
List Price	\$2,666.00	\$2,870.00	\$3,114.00	\$3,314.00



# MID-EFFICIENCY FURNACE

## C8MPV SERIES

**Gas Furnace- Two Stage, Variable Speed**  
(Softsound VS80)

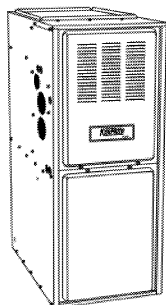
MODEL NUMBER	C8MPV050B12A	C8MPV75F14A	C8MPV100F14A	C8MPV125J20A
Input	50,000	75,000	100,000	125,000
Cooling Capacity	1.5 - 3.0 Ton	1.5 - 3.5 Ton	1.5 3.5Ton	3.0 - 5.0Ton
Vent Size	4"	4"	4"	4"
Supply Opening (in)	17 5/8x18 1/2	17 5/8x18 1/2	17 5/8x18 1/2	21 1/4x18 1/2
Dimensions (H" x W" x D")	40x15 1/2x28 1/2	40x19 1/8x28 1/2	40x19 1/8x28 1/2	40x22 3/4x28 1/2
List Price	\$2,088.16	\$2,298.96	\$2,418.00	\$2,606.48

# HIGH-EFFICIENCY FURNACES



## N9MP1 SERIES

**Upflow/Downflow / Horizontal Indoor Combustion Air Gas  
Furnace (1 Pipe Only)**  
(PS90)



MODEL NUMBER	N9MP1050B12A	N9MP1075B12A	N9MP1100F14A	N9MP1125J20A
Input	50,000	75,000	100,000	125,000
Cooling Capacity	1.5 - 3.0 Ton	1.5 - 3.0 Ton	2 - 3.5 Ton	3.5 - 5.0 Ton
Vent Size	2"	2" - 3"	3"	3"
Supply Opening (in)	14 x 18 1/2	14 x 18 1/2	17 5/8 x 18 1/2	21 1/4 x 18 1/2
Dimensions (H" x W" x D")	40 x 15 1/2x 29	40 x 15 1/2 x 29	40 x 19 1/8 x 29	40 x 22 3/4x 29
List Price	\$1,676.48	\$1,696.32	\$1,845.12	\$2,036.08

## N9MP2 SERIES

**Upflow/Downflow / Horizontal Direct Vent  
Gas Furnace (2 Pipe)**  
(PS90-DV)

MODEL NUMBER	N9MP2050B12A	N9MP2075B12A	N9MP2100F14A	N9MP2125J20A
Input	50,000	75,000	100,000	125,000
Cooling Capacity	1.5 - 3.0 Ton	1.5 - 3.0 Ton	2 - 3.5 Ton	3.5 - 5.0 Ton
Vent Size	2"	2" - 3"	3"	3"
Supply Opening (in)	14 x 18 1/2	14 x 18 1/2	17 5/8 x 18 1/2	21 1/4 x 18 1/2
Dimensions (H" x W" x D")	40 x 15 1/2x 29	40 x 15 1/2 x 29	40 x 19 1/8 x 29	40 x 22 3/4x 29
List Price	\$1,718.64	\$1,738.48	\$1,892.24	\$2,088.16

# EVAPORATOR COILS



## Eubank 'A' Coils (Plastic Drain Pan)

Model	IC24	IC30	IC36	IC42
Tonnage	2 Ton	2.5 Ton	3 Ton	3.5 Ton
Dimensions (H" x W" x D")	10x 13x19 1/2	12x13 x19 1/2	16x13x19 1/2	18x15x19 1/2
List Price	\$240.00	\$304.20	\$351.00	\$281.16

Model	IC48	IC60
Tonnage	4 Ton	5 Ton
Dimensions (H" x W" x D")	18x16 1/2x19 1/2	22x21x23
List Price	\$322.74	\$415.80

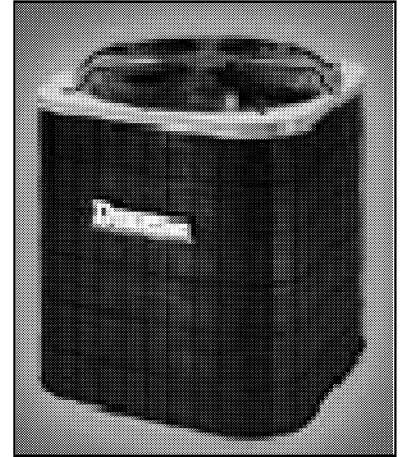
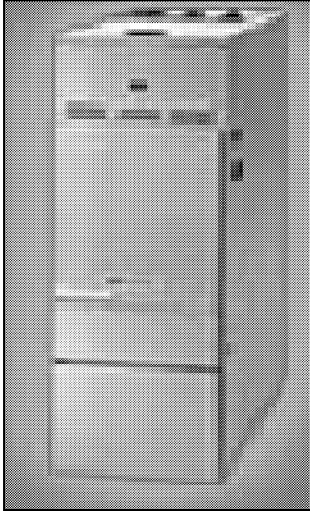
## Airmax Vertical Coils (Metal Drain Pan)

Model	AC18	AC24	AC30	AC36
Tonnage	1.5 Ton	2 Ton	2.5Ton	3 Ton
Piston Sizes	0.051	0.061	0.067	0.074
Dimensions (H" x W" x D")	10x13 1/2x18	12x13 1/2x18	14x15x19	16x15x19
List Price	\$200.51	\$224.02	\$260.00	\$294.74

Model	AC42	AC48	AC60
Tonnage	3.5 Ton	4 Ton	5 Ton
Piston Sizes	0.08	0.084	0.093
Dimensions (H" x W" x D")	18x17x19 1/2	18x17x19 1/2	20x20 1/2x19 1/2
List Price	\$380.64	\$434.10	\$517.30

## Airmax Horizontal Coils (Metal Drain Pan)

Model	HC24	HC30	HC36
Tonnage	2 Ton	2.5Ton	3 Ton
Piston Sizes	0.061	0.067	0.074
Dimensions (H" x W" x D")	25x10x18 1/2	25x10x21 1/4	25x10x24
List Price	\$336.96	\$361.92	\$382.72



**Ducane**  
AIR CONDITIONING  
AND HEATING

THE DIFFERENCE  
IS QUALITY

**25** Year  
Heat Exchanger  
Limited  
Warranty

**5** Year  
Compressor  
Limited  
Warranty

**5** Year Parts  
Limited  
Warranty

**10**  
SEER  
STANDARD  
EFFICIENCY

**12**  
SEER  
SUPER-HIGH  
EFFICIENCY

**10** Year  
Compressor  
Limited  
Warranty

# CONDENSING UNITS

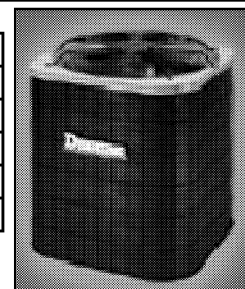


## AC10B SERIES With Reciprocating Compressor



Model	AC10B18	AC10B24	AC10B30	AC10B36
Input	18,000	24,000	30,000	36,000
Tonnage	1.5Ton	2Ton	2.5Ton	3.0Ton
Line Sizes	5/8" 3/8"	5/8" 3/8"	3/4" 3/8"	3/4" 3/8"
Dimensions (H" x W" x D")	23 1/2x22 1/2x22 1/2	23 1/2x22 1/2x22 1/2	23 1/2x22 1/2x22 1/2	27 1/2x22 1/2x22 1/2
List Price	\$984.00	\$1,000.00	\$1,110.00	\$1,194.00

Model	AC10B42	AC10B48	AC10B60
Input	42,000	48,000	60,000
Tonnage	3.5Ton	4.0Ton	5Ton
Line Sizes	7/8" 3/8"	7/8" 3/8"	7/8" 3/8"
Dimensions (H" x W" x D")	31 1/2x22 1/2x22 1/2	31 1/2x22 1/2x22 1/2	27 1/2x30x30
List Price	\$1,550.00	\$1,620.00	\$1,950.00



## AC12B SERIES With Scroll Compressor



Model	AC12B18	AC12B24	AC12B30	AC12B36
Input	18,000	24,000	30,000	36,000
Tonnage	1.5Ton	2Ton	2.5Ton	3.0Ton
Line Sizes	5/8" 3/8"	5/8" 3/8"	3/4" 3/8"	3/4" 3/8"
Dimensions (H" x W" x D")	26x22 1/2x22 1/2	27 1/2x22 1/2x22 1/2	27 1/2x22 1/2x22 1/2	31 1/2x22 1/2x22 1/2
List Price	\$1,260.00	\$1,440.00	\$1,540.00	\$1,780.00

# HIGH-EFFICIENCY FURNACE

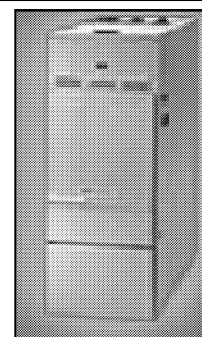


## CMPE SERIES

**Upflow / Horizontal Dual Certified Gas Furnace -  
Single Stage**  
(Fits-All 82)

MODEL NUMBER	CMPE050U2	CMPE050U3	CMPE075U2	CMPE075U3
Input	50,000	50,000	75,000	75,000
Cooling Capacity	2.5Ton	3.0Ton	2.5Ton	3.0Ton
Vent Size	2"	2"	2"	2"
Supply Opening (in)	11 1/2x18 15/16	11 1/2x18 15/16	11 1/2x18 15/16	11 1/2x18 15/16
Dimensions (H" x W" x D")	47 3/8x13 1/2x29 1/2	47 3/8x13 1/2x29 1/2	47 3/8x13 1/2x29 1/2	47 3/8x13 1/2x29 1/2
<b>List Price</b>	<b>\$1,470.00</b>	<b>\$1,550.80</b>	<b>\$1,580.00</b>	<b>\$1,653.12</b>

MODEL NUMBER	CMPE100U3	CMPE100U4	CMPE125U5
Input	100,000	100,000	125,000
Cooling Capacity	3.0Ton	4.0Ton	5.0Ton
Vent Size	2"	2"	2"
Supply Opening (in)	15x18 15/16	15x18 15/16	18 1/2x18 15/16
Dimensions (H" x W" x D")	47 3/8x17x29 1/2	47 3/8x17x29 1/2	47 3/8x20 1/2x29 1/2
<b>List Price</b>	<b>\$1,830.00</b>	<b>\$1,860.00</b>	<b>\$2,100.00</b>



# MID-EFFICIENCY FURNACE

## MPGA SERIES

**Upflow / Downflow / Horizontal**  
(Fits-All 82)

MODEL NUMBER	MPGA050B3A	MPGA075B3A	MPGA100B4A	MPGA125B5A
Input	50,000	75,000	100,000	125,000
Cooling Capacity	2.5Ton	2.5Ton	3.5Ton	5.0Ton
Vent Size	4"	4"	4"	4"
Supply Opening (in)	11 1/2x20 3/8	11 1/2x20 3/8	15x20 3/8	18 1/2x20 3/8
Dimensions (H" x W" x D")	38 1/4x13 1/2x29 1/2	38 1/4x13 1/2x29 1/2	38 1/4x17x29 1/2	38 1/4x20 1/2x29 1/2
<b>List Price</b>	<b>\$1,023.36</b>	<b>\$1,094.20</b>	<b>\$1,142.00</b>	<b>\$1,282.00</b>

# POWER VENTED UNIT HEATERS



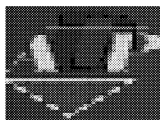
## LOW-PROFILE SERIES

Model	DUHA60	DUHA90	DUHA115	DUHA145	DUHA175	DUHA200	DUHA230	DUHA290	DUHA345	DUHA400
Heating Capacity	60,000	90,000	115,000	145,000	175,000	200,000	230,000	290,000	345,000	400,000
Flue Size	4" Dia.	4" Dia.	4" Dia.	4" Dia.	5" Dia.	5" Dia.	5" Dia.	5" Dia.	6" Dia.	6" Dia.
List Price	\$1,135.34	\$1,229.09	\$1,361.02	\$1,468.66	\$1,614.48	\$1,881.82	\$2,058.90	\$2,343.60	\$2,513.73	\$2,822.74

## STANDARD

Model	DULA30	DULA45	DULA60	DULA75
Heating Capacity	30,000	45,000	60,000	75,000
Flue Size	3" Dia.	3" Dia.	4" Dia.	4" Dia.
List Price	\$1,017.30	\$1,058.96	\$1,107.57	\$1,156.18

# ADP AIR HANDLERS



**240 Voltage (includes cooling coil, horizontal drain pan & filter rack)**

Model	BAC-024	BAC-036	BAC-048	BAC-060
Tonnage	1.5 - 2 Ton	2.5 - 3 Ton	3.5 - 4 Ton	4.5 - 5 Ton
Dimensions (H" x W" x D")	44x15x22	48x18 1/2x22	49x20x26	53x22x26
List Price	\$837.50	\$997.50	\$1,325.00	\$1,555.00



# EXTENDED WARRANTY PACKAGES



## Keeprite or Ducane Units

### For Condensing Unit & Coil

Item No.	Packages to Choose	List Price
RCU-05LP	<b>5 Year:</b> 31st Day - 5th Year Labour, 2nd-5th Year Mark-Up	\$364.21
RCU-10-5LP	<b>10 Year:</b> 31st Day-10th Year Labour, 2nd-10th Year Mark-Up, 6th-10th Year Parts.	\$693.20

### For Furnace - Gas Fired / Electric or Variable Speed Air Handler With / Without Heat

Item No.	Packages to Choose	List Price
RFA-05LP	<b>5 Year:</b> 31st Day - 5th Year Labour, 2nd-5th Year Mark-Up	\$272.14
RFA-10-5LP	<b>10 Year:</b> 31st Day-10th Year Labour, 2nd-10th Year Mark-Up, 6th-10th Year Parts.	\$686.77

NOTE TO ALL CONTRACTORS: **Labour** does not take effect until the 31st day of installation. **Mark-Up:** it is the cost multiply the allowance that is rebated. **Parts** does not take effect until the 6th year on 10 year warranty packages.

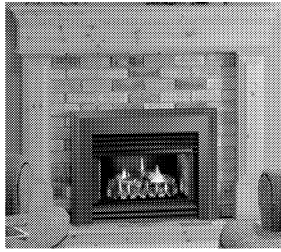
# MONTIGO

*DelRay*  
GAS PRODUCTS





# HOTSHOT INSERT FIREPLACE



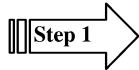
## B-VENT LINER INSERT MODEL

- ⇒ Hi-Low adjustable dual burner.
- ⇒ Six-piece fibre log set.
- ⇒ Standard millivolt control.

## Natural Gas or Propane

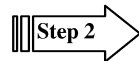
- ⇒ Heat sensor fan c/w speed control.
- ⇒ Ceramic glass.
- ⇒ Field convertible.

### THE FIREPLACE:



Model	Description	Input	List Price
*DHS	Double Burner	25,000	\$1,795.70

\*Requires louver/trim package and faceplate.



### SELECT A FACEPLATE:(must be added to complete fireplace)



Item No.	Description	List Price
WSFB	Standard Faceplate (37 1/2"Wx25"H)	\$182.15
WSF4B	Oversize Faceplate (40"Wx26"H)	\$195.25
WSF44B	Oversize Faceplate (44"Wx28"H)	\$234.56



WSFC	Custom Faceplate (48"Wx48"H), *Inner dimension is punched outer dimension must be cut in field.	\$260.77
FCBHS	Optional Control Kit for Custom Faceplates. (Incl. fanspeed control box & on/off toggle switch.)	\$90.42



FP40CS1	Square Faceplate, finished in black. (39 3/4"Wx26"H) (Incl. stepped cast iron surround finish in Charcoal Grey)	\$391.81
FP40CA1	Arched Faceplate, finished in black. (39 3/4"Wx27 3/4"H top of arch) (Incl. stepped cast iron surround finish in Charcoal Grey)	\$404.91



### SELECT A LOUVRE PACKAGE:(must be added to complete fireplace)



Item No.	Description	List Price
WSBSB	Satin Black louvres & Satin Black Trim	\$111.38
WSBPB	Satin Black louvres & Polished Brass Trim	\$124.49
WPBPB	Polished Brass louvres & Polished Brass Trim	\$137.59
WSSSS	Stainless Steel louvres & Stainless Steel Trim	\$176.90



HLTSB	Satin Black louvres	\$90.42
HLTPB	Polished Brass louvres	\$103.52
HLTSS	Stainless Steel louvres	\$116.63

# B-SERIES FIREPLACES



## DIRECT VENT

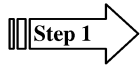
- ⇒ Top or rear vent flue outlets.
- ⇒ New log set & glowing embers.
- ⇒ Huge 370 in/sq. viewing area.

Natural Gas or Propane

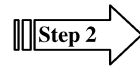
- ⇒ Hi-Low adjustable dual burners.
- ⇒ Supplied standard w/millivolt control.
- ⇒ Snap-lock for tool free access to the firebox.

\* Horizontal trim package must be purchased separately and must be field - installed.

### CHOOSE THE FIREPLACE:

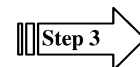


Model	B34-DT-2	B34-DR-2	B38-DT-2	B38-DR-2
<b>Description</b>	Top Vent, 34" wide	Rear Vent, 34" wide	Top Vent, 38" wide.	Rear Vent, 38" wide
<b>Input</b>	18,000	18,000	21,000	21,000
<b>Includes</b>	Fibre logset, tempered glass, new buckle door.	Fibre logset, EXT-18 vent adaptor, tempered glass, new buckle door.	Fibre logset, tempered glass.	Fibre logset, EXT-18 vent adaptor, tempered glass.
<b>List Price</b>	<b>\$1,112.40</b>	<b>\$1,112.40</b>	<b>\$1,417.57</b>	<b>\$1,417.57</b>



### SELECT HORIZONTAL TRIM PACKAGE:

Item No. (For B34)	Description	List Price	Item No. (For B38)	Description	List Price
34HT-SB6	Satin Black (6 Pc.)	<b>\$52.42</b>	38HT-SB6	Satin Black (6 Pc.)	<b>\$52.42</b>
34HT-PB6	Polished Brass (6 Pc.)	<b>\$65.52</b>	38HT-PB6	Polished Brass (6 Pc.)	<b>\$65.52</b>
34HT-SS6	Stainless Steel (6 Pc.)	<b>\$85.18</b>	38HT-SS6	Stainless Steel (6 Pc.)	<b>\$85.18</b>
LC34PCG	Willowlaser-cut faceplate (finished in Charcoal Grey)	<b>\$745.62</b>	LC34PCG	Willowlaser-cut faceplate (finished in Charcoal Grey)	<b>\$811.14</b>
LC34TSB	Willowlaser-cut trim, set of 2; (finished in Charcoal Grey)	<b>\$549.06</b>	LC34TSB	Willowlaser-cut trim, set of 2; (finished in Charcoal Grey)	<b>\$588.37</b>



### CHOOSE ANY ACCESSORIES YOU REQUIRE: (must be field-installed)

Item No.(For B34)	List Price	Description	Item No (For B38)	List Price
RBRK008	<b>\$234.56</b>	Colonial Fibre Brick Lining	RBRK138	<b>\$260.77</b>
RBRK608	<b>\$273.87</b>	RiverRock Fibre Brick Lining	RBRK618	<b>\$300.08</b>
RFK1002	<b>\$150.70</b>	Fan Kit-2, manual control	RFK1002	<b>\$150.70</b>
RFK1003	<b>\$176.90</b>	Fan Kit-2, heat-activated	RFK1003	<b>\$176.90</b>
RFK1006	<b>\$221.46</b>	Fan Kit-4, manual control	RFK1006	<b>\$221.46</b>
RFK1007	<b>\$247.67</b>	Fan Kit-4, heat-activated	RFK1007	<b>\$247.67</b>
DOA01	<b>\$142.83</b>	Arched Door Cover, Black	DOA02	<b>\$155.94</b>
DOS01	<b>\$195.25</b>	Starburst Door Cover, Black	DOS02	<b>\$208.35</b>
RX15	<b>\$268.63</b>	Wireless Remote Control Kit	RX15	<b>\$268.63</b>
BAY01	<b>\$575.27</b>	Bay Window, add-on	BAY10	<b>\$614.58</b>
01BT-SB	<b>\$45.86</b>	Black Trim for bay win.	10BT-SB	<b>\$45.86</b>
01BT-PB	<b>\$58.97</b>	Polished Brass Trim for bay win.	10BT-PB	<b>\$58.97</b>
01BT-SS	<b>\$72.07</b>	Stainless Steel Trim for bay win.	10BT-SS	<b>\$72.07</b>
*C34PO2SB	<b>\$182.15</b>	Surrond, Black 3 pc. (2" wide)	*C38PO2SB	<b>\$195.25</b>
*C34PO2PB	<b>\$195.25</b>	Surrond, Polished Brass 3 pc. (2" wide)	*C38PO2PB	<b>\$208.35</b>
*C34PO2SS	<b>\$221.46</b>	Surrond, Stainless Steel 3 pc. (2" wide)	*C38PO2SS	<b>\$234.56</b>

\*Also comes in 4 piece sets.

# MODULAR FIREPLACES



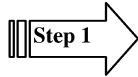
## DIRECT VENT

- ⇒ Heater Rated.
- ⇒ Hi-Low adjustable double burners.
- ⇒ Extra-large viewing area.
- ⇒ Supplied standard with millivolt control

## Natural Gas or Propane

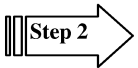
- ⇒ Vermiculite and Lava rock.
- ⇒ Top or rear Direct Vent outlets.
- ⇒ Snap-lock for tool free access to the firebox.
- ⇒ Ceramic fibre logs and glowing embers.

\* Horizontal trim package must be purchased separately and must be field - installed.



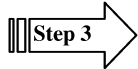
### CHOOSE THE FIREPLACE:

Model	ME34-DT-2	ME34-DR-2	*MD38DT-2	MD38DR-2
Description	Top Vent, 34" wide	Rear Vent, 34" wide	Top Vent, 38" wide	Rear Vent, 38" wide
Input	21,000	21,000	27,000	27,000
Includes	6 piece logset,tempered glass, new buckle door.	6 piece logset, EXT-18 vent adaptor.	6 piece logset, quick access door with ceramic glass	6 piece logset, EXT-18 vent adaptor.
List Price:	\$1,289.65	\$1,289.65	\$1,694.35	\$1,694.35



### SELECT HORIZONTAL TRIM PACKAGE:

Item No. (ME34)	Description	List Price	Item No. (ME38/MD38)	Description	List Price
34HT-SB6	Satin Black (6 Pc.)	\$52.42	38HT-SB6	Satin Black (6 Pc.)	\$52.42
34HT-PB6	Polished Brass (6 Pc.)	\$65.52	38HT-PB6	Polished Brass (6 Pc.)	\$65.52
34HT-SS6	Stainless Steel (6 Pc.)	\$85.18	38HT-SS6	Stainless Steel (6 Pc.)	\$85.18



### CHOOSE ANY ACCESSORIES YOU REQUIRE: (must be field-installed)

Item No.(ME34)	List Price	Description	Item No (ME38/MD38)	List Price
RBRK008	\$234.56	Fibre Brick Lining	RBRK136	\$260.77
RFK1018	\$326.29	Cross-flow Blower Kit, heat activated control	RFK1028	\$339.39
CFFCB	\$72.07	Optional Fan Speed	CFFCB	\$72.07
DOA01	\$142.83	Arched Door Cover, Black	DOA02	\$155.94
DOS01	\$195.25	Starburst Door Cover, Black	DOS02	\$208.35
RX12NG	\$404.91	Wireless Remote Control w / built in Thermostatic (Natural Gas)	RX12NG	\$404.91
RX15	\$268.63	Wireless Remote Control Kit	RX15	\$268.63
RX12LP	\$404.91	Wireless Remote Control w / built in Thermostatic (Propane)	RX12LP	\$404.91
BAY01	\$575.27	Bay Window, add-on	BAY10	\$614.58
01BT-SB	\$45.86	Black Trim for bay win.	10BT-SB	\$45.86
01BT-PB	\$58.97	Polished Brass Trim for bay win.	10BT-PB	\$58.97
01BT-SS	\$72.07	Stainless Steel Trim for bay win.	10BT-SS	\$72.07
RBK220	\$51.11	Refractory Lining for Bottom Bay win.	RBRK230	\$51.11
**C34PO2SB	\$182.15	Surrond, Black 3 pc. (2" wide)	**C38PO2SB	\$195.25
**C34PO2PB	\$195.25	Surrond, Polished Brass 3 pc. (2" wide)	**C38PO2PB	\$208.35
**C34PO2SS	\$221.46	Surrond, Stainless Steel 3 pc. (2" wide)	**C38PO2SS	\$234.56
RTS01	\$150.70	Digital Thermostat (programmable)	RTS01	\$150.70
RTS02	\$111.38	Digital Thermostat (non-program)	RTS02	\$111.38

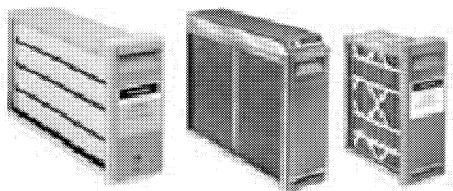
\*ME38 and MD44 are also available. Please ask!

\*\* Also comes in 4 piece sets.

# ACCESSORIES

## ELECTRONIC AIR CLEANERS

Model	Description	List Price
SAS11	Electronic Air Cleaner 16 x 25 1400 cfm	<b>\$572.30</b>
SAS18	Electronic Air Cleaner 20 x 25 2000 cfm	<b>\$705.04</b>
F50F1081	Electronic Air Cleaner Honeywell 20 x 25	<b>\$912.18</b>
F50F1099	Electronic Air Cleaner Honeywell 16 x 25	<b>\$785.56</b>
F58F1018	Electronic Air Cleaner Honeywell 16 x 25 (No Switch)	<b>\$720.17</b>



## MEDIA TYPE AIR CLEANERS

Model	Description	List Price
F100F1012	Filter c/w Housing, Honeywell 16 x 25 x 4 1/2	<b>\$342.28</b>
F100F1038	Filter c/w Housing, Honeywell 20 x 25 x 4 1/2	<b>\$368.77</b>
2200	Filter Mod #2200 Space-Guard Air Cleaner (Aprilaire)	<b>\$425.30</b>
2400	Filter Mod #2400 Space-Guard Air Cleaner (Aprilaire)	<b>\$420.00</b>
DS1625	Filter Dust Stopper 16x25	<b>\$100.00</b>
DS2020	Filter Dust Stopper 20x20	<b>\$120.00</b>
DS2025	Filter Dust Stopper 20x25	<b>\$130.00</b>

## ELECTRO-STATIC FILTERS

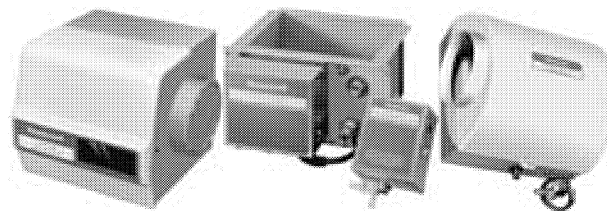
Model	Description	List Price
ESAF1425	Electrostatic Air Filters 14 x 25	<b>\$81.52</b>
ESAF1620	Electrostatic Air Filters 16 x 20	<b>\$81.52</b>
ESAF1625	Electrostatic Air Filters 16 x 25	<b>\$81.52</b>
ESAF2020	Electrostatic Air Filters 20 x 20	<b>\$81.52</b>
ESAF2025	Electrostatic Air Filter 20 x 25	<b>\$81.52</b>

## HUMIDIFIERS

Model	Description	List Price
1042	Generalaire DM Model	<b>\$260.00</b>
HE220A1234	Honeywell Flow-Thru	<b>\$273.00</b>
HE260A1234	Honeywell Flow-Thru c/w installation kit	<b>\$416.88</b>
550	Aprilaire Flow-Thru	<b>\$356.40</b>
560	Aprilaire Flow-Thru	<b>\$375.72</b>

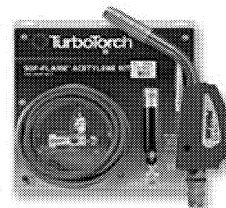
## REMED AIR HEPPA FILTERS

Model	Description	List Price
DM3000	Kanaflakt Heppa Filter - Duct Mounted	<b>\$850.00</b>
CM3000	Kanaflakt Heppa Filter - Collar Mounted	<b>\$850.00</b>



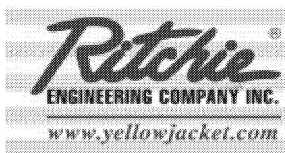


# TurboTorch®

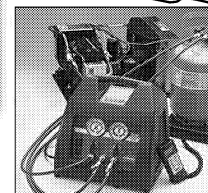


Item No.	Description	List Price
A3	3/16" Tip Acetylene	\$114.14
A5	1/4" Tip Acetylene	\$126.86
A8	5/16" Tip Acetylene	\$138.80
A11	7/16" Tip Acetylene	\$149.17
AG1	Acetylene Gauge	\$46.40
AH12	Acetylene Hose 12 ft.	\$76.28
AK1	Weld Kit Aluminium	\$46.20
ARB	Acetylene Regulator	\$155.88
F1	Lighter Flints	\$5.04
G4	Acetylene Handle w/Valves	\$149.67

Item No.	Description	List Price
L1	Round Light Sparker	\$6.16
MT2	Tank MAPP 16 oz	\$25.20
PL5A	Tip Assembly (Packaged)	\$151.22
PL8A	Tip Assembly (Packaged)	\$154.76
PL8ADLXB	DLX. B Kit (15 psi Acetylene)	\$435.02
PT1	Propane Tank	\$13.72
STK99	Torch (Packaged)	\$181.72
TK	Tank Key	\$6.16
X3B	Refrigeration & Plumbing Kit	\$558.76
X4B	Refrigeration & A/C Kit	\$581.10



## YELLOW JACKET®



### HOSES, RED / YELLOW / BLUE PLUS 2

Item No.	Description	List Price
21984	Standard Fit 48"	\$91.73
21985	Standard Fit 60"	\$104.78
21986	Standard Fit 72"	\$119.95
22984	Sealright Fit 48"	\$136.18
22986	Sealright Fit 72"	\$164.40
29984	Ball Valves 48"	\$189.45
29986	Ball Valves 72"	\$217.68

### MANIFOLDS

Item No.	Description	List Price
41212	For R12/22/502	\$88.40
41213	With 36" Hose	\$155.08
41312	For R134A	\$116.00
41712	For 410A	\$113.56

### GAUGES

Item No.	Description	List Price
49051	134A Red Gauge	\$34.93
49052	134A Blue Gauge	\$39.67
49071	134A Red Liquid Filled Gauge	\$64.37
49072	134A Blue Liquid Filled Gauge	\$67.00
49081	R12 Red Liquid Filled Gauge	\$64.37
49082	R12 Blue Liquid Filled Gauge	\$67.00

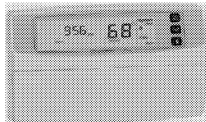
### RECOVERY MACHINES

Item No.	Description	List Price
94960	R60A 115 / 60	\$2,066.11
94962	R60 with TOS	\$2,338.40
94982	R80A 115/60	\$3,094.45

Ontario Heating Ltd.  
 4 Pine St., Toronto, On, M9N2Y8  
 P: 416-247-0045, F: 416-247-2012

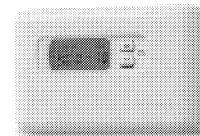
All Prices Subject to Change.

# THERMOSTATS



## HONEYWELL

Item No.	Description	List Price
L4006A1017	Aquastat	\$196.34
L4006A1959	Aquastat	\$166.56
L4008B1013	Aquastat	\$217.76
L4081A1155	Aquastat Dual	\$275.21
L6006C1034	Aquastat SPDT	\$121.80
T6069A3012	T-Stat Fan Coil	\$214.00
T631A1063	Farm-O-Stat:10-100F	\$161.62
T631A1162	Farm-O-Stat 35-100F	\$161.62
T651A3026	T-Stat Horiz. Heat/Cool 120-277v. SPDT	\$159.08
T8000C1028	T-Stat Prog. Heat/Cool 24v.	\$117.23
T8022D1095	T-Stat Horiz. Heat Only 24v.	\$40.99
T8034C1515	T-Stat Horiz. Heat/Cool 24v.	\$60.26
T8132A1171	T-Stat Magic Prog. 5 Day-2 Day Ht/Cl 24v	\$120.93
T822D1834	T-Stat Vert. Heat Only 24v.	\$36.08
T822D2642	T-Stat Vert. Heat Only 24v.	\$35.80
T834C2580	T-Stat Vert.Heat/Cool 24v	\$66.80
T8424D1024	T-Stat 2-Stage Heating , 1 Stage Cooling	\$136.38
T8600D2028	T-Stat Prog. 7 Day 24v.	\$253.56
T8624D2004	T-Stat Prog 2-Stg Heating, 2-Stage Cooling 7 Day 24v	\$324.97
T86A3097	T-Stat Rnd. Heat c/w sub-base 24v	\$66.07
T874C1240	T-Stat 2 Stage Htg. Single Stage Cooling	\$221.32
T87F2931	T-Stat Rnd. Ht/Cool C/W sub-base 24v	\$72.09
T87F3673	T-Stat Rnd. Heat/Cool c/w sub-base 24v	\$133.84



## WHITE ROGERS

Item No.	Description	List Prices
1A65W-633	T-Stat Line Voltage (Electric Heat)	\$27.08
1E30W309	T-Stat Heat Only	\$39.86
1E30W-311	T-Stat Vert. Heat Only 24v.	\$35.20
1E30W609	T-Stat Vert. Millivolt	\$46.64
1E50W-303	T-Stat Heat w/ Fan Control	\$50.50
1E56W-309	T-Stat Horiz. Heat/Cool 24v.	\$51.00
1F30-301	T-Stat Horiz. Heat Only 24v.	\$32.60
1F30W-301	T-Stat Horiz. Heat Only 24v.	\$32.60
1F30W604	T-Stat Horiz. Millivolt	\$47.14
1F56W-361	T-Stat Horiz. Heat/Cool 24v.	\$51.00
1F57W-314	T-Stat 2 Stage Heat/Cool 24v.	\$140.00
1F78-151	T-Stat Programmable	\$111.00
1F81-74	T-Stat 2 Stage Heat/Cool 24v.	\$200.50

Ontario Heating Ltd.

4 Pine St., Toronto, On, M9N2Y8

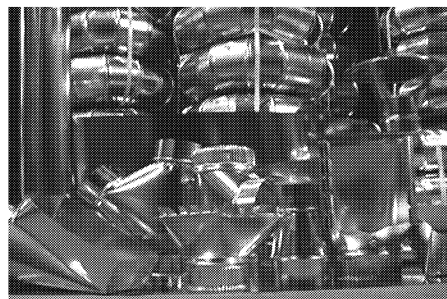
P: (416) 247-0045, F: (416) 247-2012

All Prices Subject to Change.

# ELBOWS

## ELBOWS ALUMINIUM

Item No.	Description	List Price
ELBA39022	3"x 90 deg. 22Ga.	\$4.42
ELBA49022	4"x 90 deg. 22Ga.	\$4.34
ELBA59022	5"x 90 deg. 22Ga.	\$5.22
ELBA69022	6"x 90 deg. 22Ga.	\$7.70
ELBA89022	8"x 90 deg. 22Ga.	\$15.48



## ELBOWS GALVANIZED

Item No.	Description	List Price
ELBG049026	4"x 90 deg. 26Ga.	\$5.72
ELBG049030	4"x 90 deg. 30Ga.	\$2.46
ELBG059026	5"x 90 deg. 26Ga.	\$6.64
ELBG059028	5"x 90 deg. 28Ga.	\$5.22
ELBG059030	5"x 90 deg. 30Ga.	\$2.54
ELBG069026	6"x 90 deg. 26Ga.	\$7.66
ELBG069030	6"x 90 deg. 30Ga.	\$2.98
ELBG079026	7"x 90 deg. 26Ga.	\$9.50
ELBG079028	7"x 90 deg. 28Ga.	\$6.78
ELBG089026	8"x 90 deg. 26Ga.	\$11.74
ELBG089028	8"x 90 deg. 28Ga.	\$9.70
ELBG099026	9"x 90 deg. 26Ga.	\$17.92
ELBG099028	9"x 90 deg. 28Ga.	\$17.18

Item No.	Description	List Price
ELBG109026	10"x 90 deg. 26Ga.	\$21.39
ELBG109028	10"x 90 deg. 28Ga.	\$19.73
ELBG129026	12"x 90 deg. 26Ga.	\$26.09
ELBG129028	12"x 90 deg. 28Ga.	\$22.82
ELBG149026	14"x 90 deg. 26Ga.	\$35.74
ELBG169024	16"x 90 deg. 24Ga.	\$71.92
ELBG169026	16"x 90 deg. 26Ga.	\$67.64
ELBG189024	18"x 90 deg. 24Ga.	\$93.74
ELBG189026	18"x 90 deg. 26Ga.	\$86.24
ELBG209024	20"x 90 deg. 24Ga.	\$100.02
ELBG229024	22"x 90 deg. 24Ga.	\$119.94
ELBG249024	24"x 90 deg. 24Ga.	\$137.68

## ELBOWS STAMPED

Item No.	Description	List Price
ELBS049024	4"x 90 deg. 24Ga.	\$43.04
ELBS054524	5"x 45 deg. 24Ga.	\$30.02
ELBS059024	5"x 90 deg. 24Ga.	\$46.04
ELBS064524	6"x 45 deg. 24Ga.	\$35.37
ELBS069024	6"x 90 deg. 24Ga.	\$52.73
ELBS084524	8"x 45 deg. 24Ga.	\$43.39
ELBS089024	8"x 90 deg. 24Ga.	\$82.76

Item No.	Description	List Price
ELBS099024	9"x 90 deg. 24Ga.	\$105.44
ELBS104524	10"x 45 deg. 24Ga.	\$60.72
ELBS109024	10"x 90 deg. 24Ga.	\$122.12
ELBS124524	12"x 45 deg. 24Ga.	\$76.73
ELBS129024	12"x 90 deg. 24Ga.	\$152.15

# FITTINGS & PIPE

## SIDE TAKE OFF

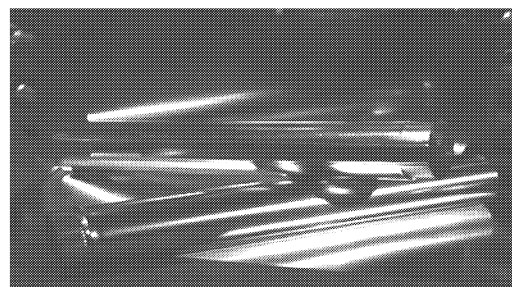
Item No.	Description	List Price
STO4	4"	\$3.94
STO5	5"	\$4.20
STO6	6"	\$4.40
STO7	7"	\$7.26
STO8	8"	\$9.24
STO9	9"	\$22.31
STO10	10"	\$21.50
STO12	12"	\$23.36

## SNAPLOCK PIPE ALUMINIUM

Item No.	Description	List Price
SPA33622	3"x 36 22Ga.	\$8.61
SPA43622	4"x 36 22Ga.	\$11.00
SPA53622	5"x 36 22Ga.	\$13.15
SPA63622	6"x 36 22Ga.	\$17.10

## TOP TAKE OFF

Item No.	Description	List Price
TTO4	4"	\$3.16
TTO5	5"	\$3.72
TTO6	6"	\$4.71
TTO7	7"	\$7.26
TTO8	8"	\$9.24
TTO9	9"	\$21.75
TTO10	10"	\$21.84
TTO12	12"	\$24.03



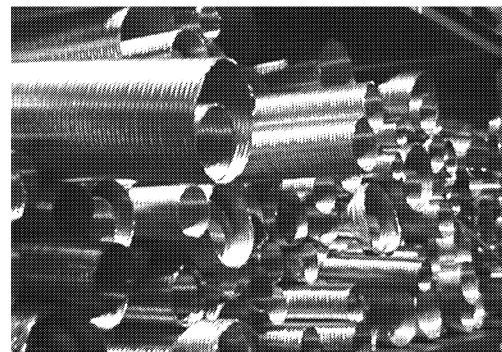
## SNAPLOCK PIPE GALVANIZED

Item No.	Description	List Price
SPG043026	4"x 30 26Ga.	\$11.02
SPG046026	4"x 60 26Ga.	\$22.09
SPG046030	4"x 60 30Ga.	\$6.23
SPG053026	5"x 30 26Ga.	\$12.52
SPG056030	5"x 60 30Ga.	\$6.72
SPG063026	6"x 30 26Ga.	\$14.41
SPG063030	6"x 30 30Ga.	\$7.12
SPG066030	6"x 60 30Ga.	\$8.12
SPG073026	7"x 30 26Ga.	\$15.65

Item No.	Description	List Price
SPG076030	7"x 60 30Ga.	\$15.49
SPG083026	8"x 30 26Ga.	\$18.00
SPG086030	8"x 60 30Ga.	\$20.70
SPG093026	9"x 30 26Ga.	\$22.00
SPG103026	10"x 30 26Ga.	\$27.28
SPG123024	12"x 30 24Ga.	\$36.00
SPG123026	12"x 30 26Ga.	\$31.76
SPG143026	14"x 30 26Ga.	\$37.02

## ALUMINIUM FLEX PIPE

Item No.	Description	List Price
AFP0310	3"x 10'	\$10.24
AFP0410	4"x 10'	\$11.94
AFP0510	5"x 10'	\$14.98
AFP0610	6"x 10'	\$17.88
AFP0710	7"x 10'	\$23.84
AFP0810	8"x 10'	\$23.87
AFP0910	9"x 10'	\$30.56
AFP1010	10"x 10'	\$29.68
AFP1210	12"x 10'	\$37.04
AFP1410	14"x 10'	\$51.12





# LINER KITS & DIFFUSERS

## LINER KIT ALUMINIUM

Item No.	Description	List Price
LKAF420	4" x 20'	\$90.28
LKAF425	4" x 25'	\$95.14
LKAF430	4" x 30'	\$118.18
LKAF435	4" x 35'	\$130.32
LKAF520	5" x 20'	\$142.72
LKAF525	5" x 25'	\$121.36
LKAF530	5" x 30'	\$139.46
LKAF50520	5 1/2" x 20'	\$134.52
LKAF50525	5 1/2" x 25'	\$154.20
LKAF50530	5 1/2" x 30'	\$180.42
LKAF50535	5 1/2" x 35'	\$200.12

Item No.	Description	List Price
LKAF620	6" x 20'	\$132.86
LKAF625	6" x 25'	\$147.64
LKAF630	6" x 30'	\$183.70
LKAF635	6" x 35'	\$183.70
LKAF725	7" x 25'	\$187.00
LKAF730	7" x 30'	\$216.82
LKAF735	7" x 35'	\$232.90
LKAF825	8" x 25'	\$216.54
LKAF830	8" x 30'	\$367.90
LKAF835	8" x 35'	\$275.58

## LINER KIT STAINLESS STEEL

Item No.	Description	List Price
LKSSF420	4" x 20'	\$232.52
LKSSF425	4" x 25'	\$290.60
LKSSF430	4" x 30'	\$348.70
LKSSF435	4" x 35'	\$406.78
LKSSF520	5" x 20'	\$290.60
LKSSF525	5" x 25'	\$363.28
LKSSF530	5" x 30'	\$435.88
LKSSF535	5" x 35'	\$508.54
LKSSF50530	5 1/2" x 30'	\$480.84

Item No.	Description	List Prices
LKSSF620	6" x 20'	\$348.70
LKSSF625	6" x 25'	\$435.88
LKSSF630	6" x 30'	\$523.02
LKSSF635	6" x 35'	\$610.22
LKSSF720	7" x 20'	\$406.80
LKSSF725	7" x 25'	\$508.54
LKSSF730	7" x 30'	\$610.22
LKSSF735	7" x 35'	\$711.91
LKSSF820	8" x 20'	\$464.94
LKSSF825	8" x 25'	\$581.14
LKSSF830	8" x 30'	\$698.76
LKSSF835	8" x 35'	\$813.59

## ROUND DIFFUSERS / DAMPER

Item No.	Description	List Prices		Item No.	Description	List Prices
12900	Diffuser 6" dia.	\$15.44	→	13220	Damper 6" dia.	\$25.97
12901	Diffuser 8" dia.	\$17.74	→	13221	Damper 8" dia.	\$26.51
12902	Diffuser 10" dia.	\$22.11	→	13222	Damper 10" dia.	\$34.59
12903	Diffuser 12" dia.	\$29.48	→	13223	Damper 10" dia.	\$45.28

## LAY IN DIFFUSERS / DAMPER

Item No.	Description	List Prices		Item No.	Description	List Prices
LID0624	Dif. Square 6" dia.- 24x24	\$47.88	→	D-100-06	Damper Sliding Blade 6" dia.	\$30.00
LID0824	Dif. Square 8" dia.- 24x24	\$47.88	→	D-100-08	Damper Sliding Blade 8" dia.	\$30.00
LID1024	Dif. Square 10" dia.- 24x24	\$47.88	→	D-100-10	Damper Sliding Blade 10" dia.	\$30.00
LID1224	Dif. Square 12" dia.- 24x24	\$47.88	→	D-100-12	Damper Sliding Blade 12" dia.	\$30.00